

GROUP 52A

INTERIOR

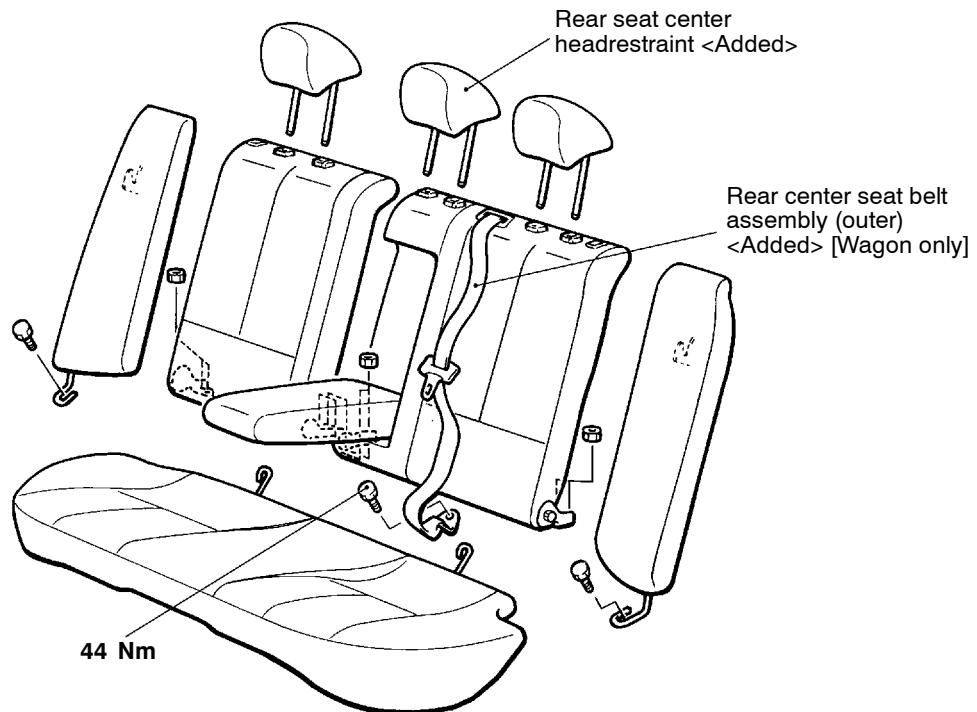
GENERAL

OUTLINE OF CHANGES

- Rear seat center headrest has been added.
- Service procedures have been changed due to the addition of the rear center seat belt (incorporated in the rear seat) <Wagon>.

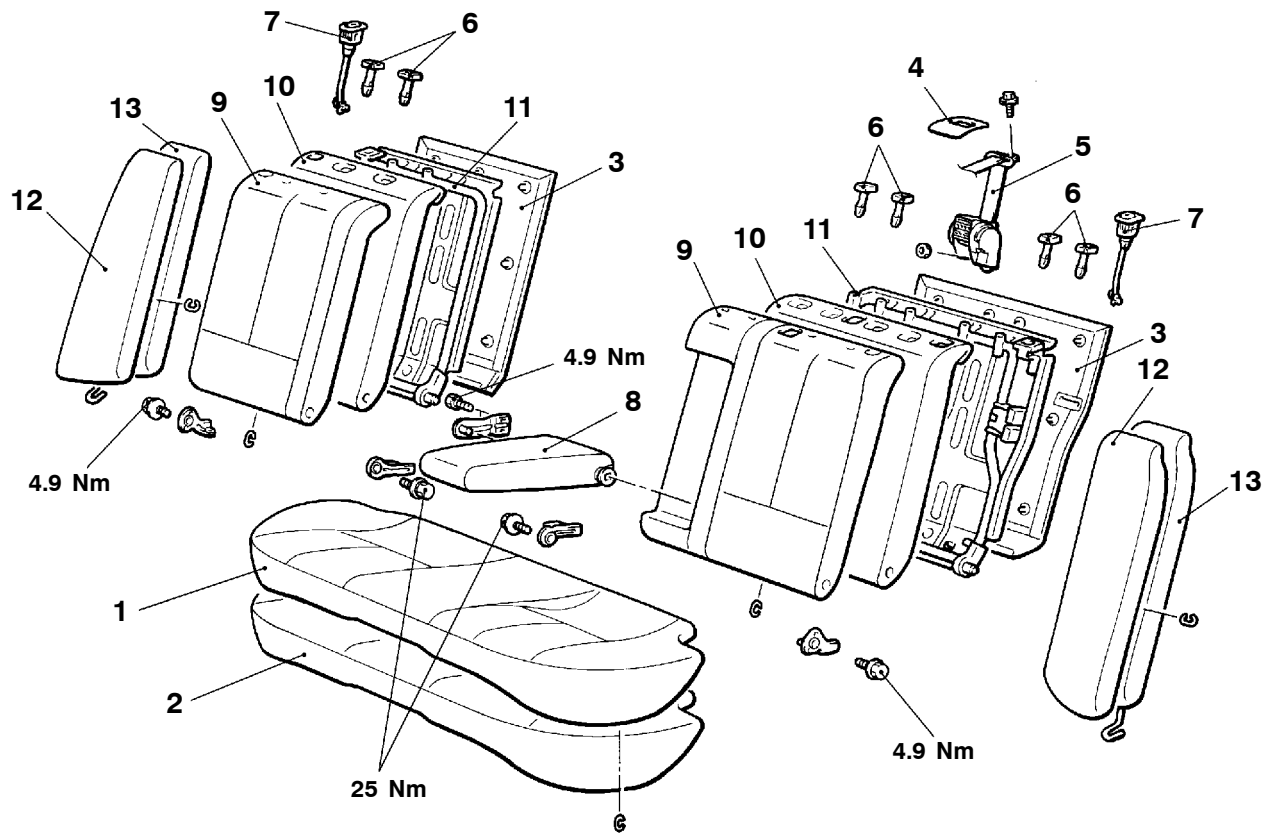
REAR SEAT

REMOVAL AND INSTALLATION



A1910282

DISASSEMBLY AND REASSEMBLY



A1910283

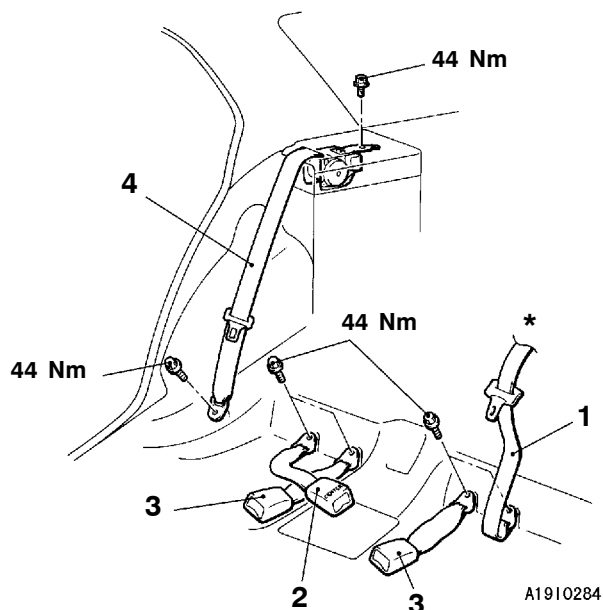
Disassembly steps

1. Seat cushion cover
2. Seat cushion pad
3. Seatback panel
4. Garnish <Wagon>
5. Rear center seat belt assembly (outer) <Wagon>
6. Headrest guide

7. Unlock knob
8. Armrest
9. Seatback cover
10. Seatback pad
11. Seatback frame
12. Side seatback cover
13. Side seatback pad

REAR SEAT BELT <Wagon>

REMOVAL AND INSTALLATION



Removal steps

- Rear seat (Refer to P.52A-1.)
- 1. Rear centre seat belt assembly (outer)
- 2. Rear centre seat belt assembly (inner)
- 3. Rear seat belt assembly (inner)
- Retractor trim
- 4. Rear seat belt assembly (outer)

NOTE

*: Refer to rear seat disassembly and reassembly procedures (P.52A-2) for the retractor removal and installation of the rear centre seat belt assembly (outer).

NOTES